



NEWSCAPE



Allee of spring blooms at Oak Spring Garden, Home of Bunny Mellon

OBJECTIVES OF THE LANDSCAPE DESIGN SCHOOLS

- ★ Develop a greater sense of appreciation, pride, and knowledge about our private and public gardens.
- ★ Become better educated to make changes in our surroundings so that they will be more beautiful, useful, convenient, ecologically sound and easily maintained.
- ★ Stimulate interest in all phases of landscape design, including community planning that will affect all of our lives.
- ★ Develop a contingent of qualified Landscape Design Consultants to serve in such decision-making areas of public life as providing leadership, educational programs, scholarships, awards and promoting better landscape design.

From the Editor:

Welcome to our readers! You are a busy group dealing with schools, tours and events during challenging times. Please take care and stay safe.

Please forward Newscape to your Consultants.

Please send me information about your projects, meetings and schools by February 1, 2025 for inclusion in our Spring 2025 issue of *Newscape*. I look forward to including articles and photos about your events.

All submissions must be original material. Photos are welcome! Please send articles in Word format and photos to the Editor at CSCarbaugh@verizon.net.

Table of Contents

| | |
|-------------------------------|---|
| Landscape Design School | 2 |
| Connecticut | 3 |
| Georgia | 4 |
| National Capital Area | 4 |
| Pennsylvania | 5 |
| South Carolina | 6 |
| Virginia | 7 |
| New Jersey | 8 |
| Schools | 9 |

Photo by Caroline Carbaugh

NEWS FROM OUR NATIONAL CHAIRMEN:

From the Landscape Design School Chairman

Greetings,

Get the credit you deserve!

Since the Summer, 2024 issue of *The National Gardener* article “Down the Garden Path - Landscape Design School News”, which discussed reinstatement, several lapsed consultants have gone through the process. The information is repeated here because there has been recent clarification of one of the requirements of the process. Reinstatement must begin with a consultant filling out Form 10 (available on the NGC website under “School Resources”) signed by their state chairman who forwards to the appropriate NGC School Accrediting Chairman.

The conditions which require a consultant to reinstate their credentials:

A lapsed consultant can reinstate their credentials “within a seven-year period from the date of their certification”.

(Please refer to *NGC’s Environmental, Gardening, Landscape Design Schools – Guide to Students and Consultants* available on the NGC website: gardenclub.org) Scroll down a school’s tab for “School Resources” which will take you to the page which includes the *Schools* (Environmental, Gardening, Landscape Design) *Handbook*, the guide referenced above, and all Schools Forms).

After Form 10 (top part) is completed, the consultant must complete two courses (must take a course, **no refreshers**), but no exams are required. After completing the two courses, Form 10 must be signed by the consultant’s state chairman who forwards the form to the NGC School Accrediting Chairman for the region (that includes the state where the applicant resides) who forwards to NGC. **(Clarification of refresher time limit after completing required courses)** “The next refresher that counts towards the Consultants Form 7 record must be taken within **two years** of completing reinstatement course requirements”.

Now that there are Zoom courses, a consultant can prevent having to deal with reinstatement if they can take an offered In-person or Zoom course that will keep their credentials up to date. **It’s important for a consultant (or student for that matter) to keep track of their own records. School/refresher attendees are the only ones who can be certain which courses are taken.** A state school chairman may not receive the fully accredited forms back promptly (from a state that organizes the course, or another state that offers a Zoom course) since it does take longer for courses to be processed and accredited from the time the Local Chairman (course organizer) sends their paperwork to the State Chairman for approval, who then sends on paperwork to the appropriate NGC School Accrediting Chairman for review, who then also electronically sends it to NGC for accreditation.



Greenhouse at Bunny Mellon’s

It’s time-consuming, where anywhere along the process, procedures may fail. Let’s face it – whoever deals with any stage of the process of organizing a course, reviewing/approving paperwork, getting information back to the consultant’s state school chairman, and forms back to you, is a **volunteer!** **In the end it has to be you (consultant and student) who must keep your own records up to date to make sure you can get the credit you deserve!**

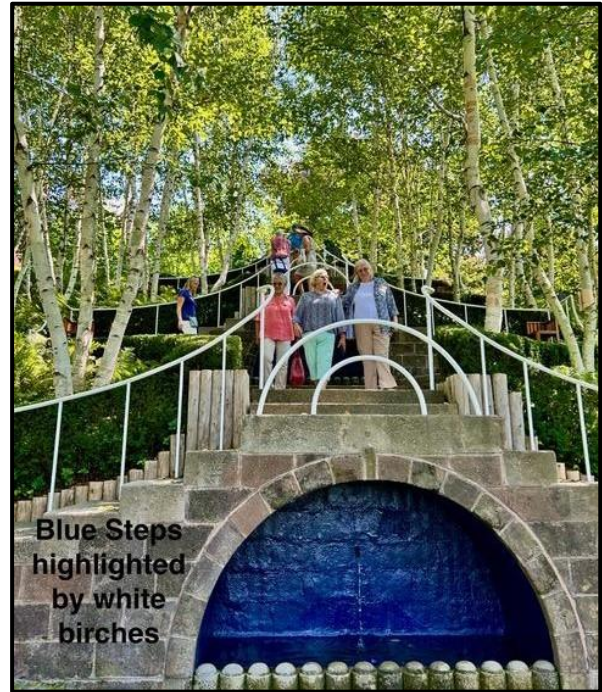
*Carol Yee,
NGC Landscape Design School Chairman*

NEWS FROM LANDSCAPE DESIGN CONSULTANTS FROM ACROSS THE COUNTRY

Connecticut

On August 5, 28 of us gathered for a bus trip to visit Massachusetts’s two beautiful gardens in the Berkshires: Naumkeag and The Mount. Built during the “Gilded Age”, we were there to admire the beauty of the gardens, the architecture of the homes and learn history about this period in time. Naumkeag and the Mount reflect the opulence of the era, but in very different ways.

Naumkeag was built as a compound for an active family that appreciated nature and enjoyed being outdoors. The planned gardens are less formal and meant to incorporate the natural beauty of the site and the long vistas of the Berkshire Mountains. There are formal elements in the plantings, such as an allée of trees, various pavilions and a staircase designed within a birch stand that is world famous today. Whimsical elements lend a more relaxed feeling to the property.



Blue Steps highlighted by white birches

The Mount (home to author, designer, and humanitarian Edith Wharton) is more formal and opulent. As with Naumkeag, the house is located at the highest elevation in the property to enjoy views of a lake and the mountains beyond. A walled French and Italian Garden are laid out below, on either side of the house, and connected by an allée of pleached Linden trees. They can be enjoyed from the terrace of the home, where we gathered for lunch, prior to our guided tour of the grand 47 room home.



Naumkeag's Moon Gate Chinese Garden



The red coleus gives this structure a burst of attention

The scale at The Mount was grander, but both properties were uniquely beautiful. It inspired and energized us to get back to our own gardens and perhaps incorporate an element that particularly appealed to us. For me, it's a very scaled down version of a white astilbe garden, surrounded by a low boxwood hedge, with a white climbing hydrangea behind it, on my brick garage wall. Does this sound familiar? It was part of the Italian garden at the Mount. We witnessed a moment in time. While most of us cannot live in this style, it can affect how we design our own gardens and appreciate the natural beauty all around us.

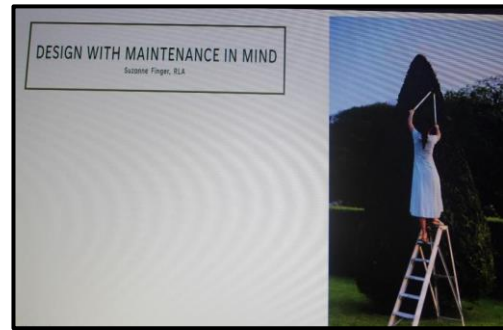
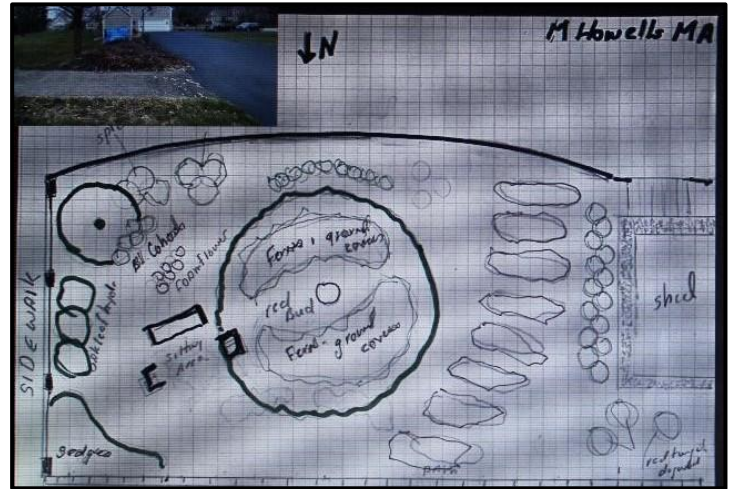


Photos by Susan Laursen
Chair, Connecticut Landscape Design Council

Millie C. Legenhauen,
Garden Club of New Haven

Landscape Design School in Georgia

Four Landscape Design Schools were held via Zoom in Athens, GA. Course 2 on November 8-9, 2023 had 26 registered, Course 1 on March 13-14, 2024 had 22 registered, Course 3 on April 2-3, 2024 had 21 registered, and Course 4 on May 29-30, 2024 had 18 registered. By offering virtual courses, attendees were from California, Arizona, Florida, New York, Maine, Kentucky, Massachusetts, Maryland, Connecticut, Tennessee, South Carolina and of course Georgia. Marilyn McDonnell was local chairman and did a fantastic job on securing excellent Instructors.



Betty Davis, LDS Chairman
The Garden Club of Georgia, Inc.

National Capital Area

On September 11, 2024, the three councils in the National Capital Area toured the Museum of the Shenandoah Valley. The trip was organized by the Landscape Design Council and the Gardening and Economic Consultants Councils joined them. On a beautiful fall day, we were treated to wonderful vistas of gardens and flowers with fascinating glass sculptures interspersed with the plants and blooms. *Gardens of Glass: the Art of Craig Mitchell Smith* contains 30 large sculptures of flowers, insects and more spread over 7 acres. The Museum sits on land originally claimed by Winchester founder James Wood in 1735. The property was passed through generations of Wood and Glass families until being acquired by Wood descendant Julian Wood Glass Jr. between 1952 and 1955.



appearance as other flowers begin to fade with the shorter days. While the floral displays may not be as boisterous as a spring or summer garden, these flowers do reward the late season visitor.” *

* <https://www.themsv.org/>

**Caroline Carbaugh,
NCA Landscape Design Council**

Pennsylvania

GCFP GARDEN TOUR OF ENGLAND

Our Garden Tour of England exceeded my expectations!

In planning the itinerary, my goal was to be mindful of NGC’s 4 pillars of Gardening, Landscape Design, Environment and Floral Design. The gardens I selected included Sissinghurst, Hever Castle, Glendurgan, Stourhead, Trebah, Hidcote and The Lost Gardens of Heligan. Stourhead demonstrated some of the principles we learned in Landscape Design School. While some books claim that Capability Brown designed Stourhead, our guide dispelled that myth by explaining that he was a frequent visitor who enhanced the original design. My favorite concept of “conceal and reveal” was demonstrated so nicely because each time the path curved, a concealed vista loomed around the corner. It was breathtaking!

In order to include environmental principles, we visited the Eden Project. It was amazing to see the transformation of 100 acres of land that had been a deserted ugly clay quarry into an educational wonderland teaching environmental and conservation principles. Their mission states “we demonstrate and inspire positive action for the planet.”



“When people hear autumn flowers, thoughts immediately turn to chrysanthemums, but many of our late summer plants continue to bloom as the weather cools. The annual displays of zinnias, salvias, cockscomb, globe amaranth, and others are still going strong. A few annuals may be struggling, but others are happy to keep the show going until the first frost.



Several late summer perennials really take off in the early fall. Asters, goldenrod, turtlehead, Jerusalem artichoke, and others all put on a big show as the calendar flips into October. Other perennials practically wait for the Halloween decorations to come out. Toad lily, Tartarian aster, monk’s hood (aka wolfbane – a perfect Halloween plant), and witch hazel all make their

**Hever
Castle**





Eden Project

Our final day was spent at the Chelsea Flower Show. We were fortunate to have Jenny Rose Carey give us a preview of the show to prepare us for the challenges and delights of navigating Chelsea. Jenny is a prominent horticulturist in southeastern Pennsylvania who grew up in England and married an American. She goes back to England annually to visit her father and aunts and attend the Chelsea Flower Show.

We learned from Jenny that the Chelsea Flower show is 111 years old, and the Pavilion is the size of 52 London buses! She explained that the “Top Flight” exhibits would be found on “Main Street.” These exhibits would be the equivalent to the PHS Flower Show Landscape Exhibits. They compete for the Gold, the Silver Gilt, Silver and Bronze. The criteria were Intent, Design, Construction and Plant Selection and Quality.

The day wouldn’t have been complete without the shopping avenues. I especially appreciated that the perimeter of the entertainment area had Container Garden Exhibits, house plant exhibits, and balcony gardens. The day was simply magical and a wonderful grand finale to our adventure together.

Our next trip will be a Food and Garden Tour of Italy which will depart on September 29, 2029. The trip will be 12 days in the Lake District, Cinque Terre and Florence with a 3-day extension near Rome.

**Sharon Richardson,
Central Area PA LDC Chair**



Glendurgan Maze

**Two group pictures taken by British Guide, Tim West
Other two pictures taken by Sharon Richardson**

South Carolina

For 2024, the South Carolina Landscape Design School will be offering Course 3 on Tuesday, November 12 and Wednesday, November 13. As in past years the program will be held at Founders Hall at Charles Towne Landing State Historic Site in Charleston, SC.

Topics covered in this year’s course include Woody Plants in the Landscape, Herbaceous Materials in the Landscape, The Landscape Design Process, and Design with Maintenance in Mind. Highlights include:

- PJ Gartin, author of the book “Some Like it Hot: Flowers That Thrive in Hot Humid Weather”, will be discussing the unique characteristics of the Southeastern landscape and the designs and herbaceous materials that thrive there.
- A Design Studio Case Study where each student will have the opportunity to create their own integrated landscape design plan for a historic property in downtown Charleston. Upon completion of their design, students will compare and contrast their individual designs with those of professional landscape architects.

- Our Featured Speaker will be Brie Arthur, a bestselling author and distinguished horticulturist. Brie will be presenting “The Foodscape Revolution” based on the concepts and principles found in her two influential books, "The Foodscape Revolution" and "Gardening with Grains".

As of mid-August, the class is at about 70% capacity and currently there is room for additional students to register if interested. Additional information may be found on the Garden Club of South Carolina’s web site at the following link: <https://gardenclubofsc.org/Schools>.

**Paul Gilson,
South Carolina LDS School Chair**

Virginia

Virginia Landscape Design Consultants Council Tours Charlottesville Gardens

Members of the Virginia Landscape Design Consultants Council (VLDC) enjoyed a beautiful day of enhanced learning by visiting three magical gardens in Free Union, Virginia, near Charlottesville. While the VFGC Landscape Design School teaches ideas and principles, tours provide students an immersion in landscape design.



Two of the gardens were private residences, and one was a farm wedding and events venue. The private gardens featured woodland gardens showcasing shade plantings and native grasses, delightful garden rooms, large kitchen gardens, and cutting gardens in full bloom. Mountain vistas, beautiful fountains and unique garden sculptures added to the beauty of the gardens. Waterperry Farm consisted of many acres devoted to elegant garden rooms, meandering paths, parterres,

and lovely color palettes, with the feel of a large botanical garden on grounds that were previously farm fields.

Susan Gaskill, VLDC Vice President, arranged the tours, and VLDC members attended from throughout Virginia. “I greatly enjoyed the spring garden tours. Many of the concepts introduced in landscape design classes were on display in the gorgeous gardens we saw,” said Marguerite Mars, a member of Laurel Garden Club in Springfield, Virginia.



**Formal gardens at Waterperry,
where the land was once farm fields with no trees**



**Careful plant selection results
in a beautiful contrast of color**

Photos by Donna Cottingham

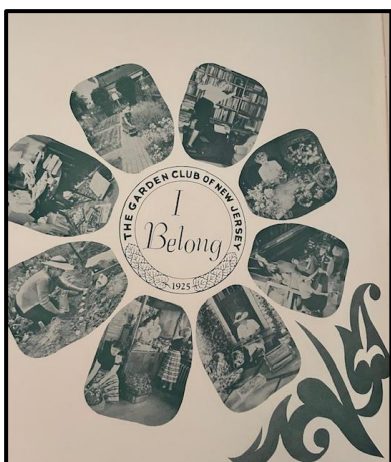
The next Landscape Design School will be held September 30 – October 1 at Lewis Ginter Botanical Garden in Richmond. For information, contact Marty Bowers, martbw@gmail.com. Students who successfully complete one two-day course are eligible to join VLDC and participate in garden tours that expand the classroom education.

**Donna Cottingham,
Virginia Landscape Design Consultants Council**

New Jersey

As we begin our studies on Landscape Design, the book “Stewards of the Land: A Survey of Landscape Design Architecture and Design in America” is used as a reference. What an accomplishment for the National Council of State Garden Clubs, Inc. 1999. This is an important historical tool as our curriculum has expanded to the challenges of our current design development.

We think back to 100 years with New Jersey’s first President in 1925: Mrs. Arthur M. Decker (Ethel Sanborn Decker). We researched the names for the Presidents who are listed with their “married” name. We believe we have successfully found their first names! A toast to all their hard work. Garden Club of New Jersey will be celebrating 100 years in May 2025.

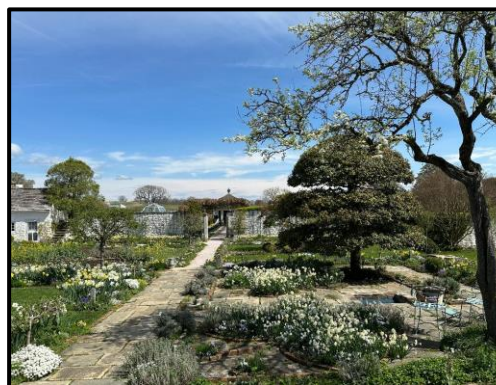


The following publications are available on GCNJ website: The Green Crusade – 40 years (1925 –1965); The Garden Club of New Jersey in Review – 20 years (1965-1985); and The Green Crusade continues by Nurturing Our World for A Beautiful Tomorrow – 25 years (1985-2010). Currently, have a draft of the next volume of our history (2010 to present).

As stated in one of the publications: “To be ignorant of what occurred before you is to remain always a child. For what is the worth of human life, unless it is woven into the life of our ancestors by the records of history.”
Cicero

**Terese Blake, LDS Chair
Garden Club of New Jersey**

Bunny Mellon’s Estate at Oak Spring Garden Foundation



NATIONAL GARDEN CLUBS SCHOOLS
**LANDSCAPE DESIGN
SCHOOLS/REFRESHERS****Kentucky****August 26 – 27, 2025.****Elizabethtown.** Course 1. (In-Person)Contact Person: Debbie Skaggs
Skaggs@scrtc.com**Louisiana****October 8 – 9, 2024.****Baton Rouge.** Course 1. (In-Person)Contact person: Gail Lonibos
glonibos@yahoo.com**Maine****October 9 – 10, 2024.****Falmouth.** Course 2. (Hybrid)Contact Person: Nancy Atwell
atwelln@aol.com**Massachusetts****October 29 – 31, 2024.****Waltham.** Course 2. (Virtual)

Contact Person: TBD

Michigan**September 24 – 26, 2024.****Lansing.** Course 2. (In-Person)Contact person: Ronalee P.
rpolad@migardenclubs.org**Mississippi****December 5 – 6, 2024.****Starkville.** Course 2. (In-Person)Contact Person: Lynda Dickerson
lwdickerson@bellsouth.net**South Carolina****November 12 – 13, 2024.****Charleston.** Course 3. (In-Person)Contact Person: Paul Gilson
Pgilson@verizon.net**Virginia****September 30 – October 1, 2024.****Richmond.** Course 3. (In-Person)Contact person: Marty Bowers
martbw@gmail.com**ENVIRONMENTAL
SCHOOLS/REFRESHERS****Missouri****October 7 - 8, 2024****St. Louis.** Course 3. (Zoom)Contact Person: Pat Rupiper
patrupiper@gmail.com**March 24 – 27, 2025.****St. Louis.** Course 2. (Zoom)Contact Person: Jan Conant
djconant@msn.com**Texas****January 10 – 12, 2025****Mexia.** (In-Person)Sarah McReynolds
esarabeth@aol.com**Wisconsin****September 27 – 28, 2024.****Sheboygan.** Course 2. (In-Person)Contact person: Karen Merlau
tmerlau@tds.net**GARDENING
SCHOOLS/REFRESHERS****Arkansas****September 27 - 28, 2024.****West Memphis.** Course 2. (In-Person)Contact Person: Burnita Hearne
bhearne@uada.edu**Florida****September 30 – October 2,****2024. New Smyrna Beach.**

Course 1. (Virtual)

Contact Person: Sally Flanagan.
ssflan@aol.com**February 10 – 12, 2025.****New Smyrna Beach.** Course 2. (Virtual)Contact Person: Sally Flanagan.
ssflan@aol.com**Washington****October 28 – 29, 2024.****Tacoma.** Course 2. (In-Person)Contact Person: Kathleen Muckian
nmuckian@comcast.net**NGC MULTIPLE REFRESHERS****Georgia.****March 11 – 13, 2025. Valdosta.****Tri-Refresher** in Environmental, Gardening, & Landscape Design Schools hosted at the 2025

Deep South Convention, sponsored by the Garden Club of Georgia, Inc.

Newscape Editor:**Caroline Carbaugh -**
cscarbaugh@verizon.net

**Previous Issues of
Newscape and the
Directory of LD
Schools and Councils**

Previous issues of *Newscape* can be accessed in the Publications area of the NGC website, under *Get Involved* on the home page or at <https://gardenclub.org/newscape>.

The Directory of Landscape Design Schools and Councils Chairs is now located on the Schools Resources page, at the bottom under School Chairmen Directories at <https://www.gardenclub.org/school/schools-resources>
